

# REGION-FIRST CLOUD-BASED SMART FLEET MANAGEMENT PLATFORM FOR SINGAPORE SCHOOL & PRIVATE HIRE BUS OWNERS' ASSOCIATION (SSPHBOA)

Overdrive pioneers a cloud-based Smart Fleet Management platform for SSPHBOA. A nationwide project to encourage bus owners to digitalise their fleet, improving operational efficiency and enhancing safety by monitoring driver behaviour.

## The Challenge

As a representative body of private bus service companies, SSPHBOA were faced with several challenges:

### 1. Vehicle Maintenance and Repair

Many small operators lack a proper system to keep track of and diagnose the operating condition of their buses, leading to higher maintenance and repair costs.

### 2. Adapting to Last-Minute Changes

Bus operators face challenges in providing timely customer service and efficiently handling last-minute changes. Dealing with such changes can be time-consuming and involve low-value tasks.

### 3. High Accident Rate

Drivers' lack of concentration while driving, such as driving while tired, using mobile phones, or smoking, contributes to a higher accident rate.

### 4. Manual Logging and Planning

The absence of a proper system for planning drivers and scheduling routes leads to the wastage of man-hours. Manual processes for logging and planning are prone to errors and time-intensive.

### 5. Complicated Bookkeeping and Payment Process

Current cash transactions lack a proper system for replacement, resulting in wasted man-hours and errors in cash handling.

### 6. Manpower Issues

Bus operators are grappling with a shortage of manpower which resulting in inefficient operation and increase in safety risks within the industry.

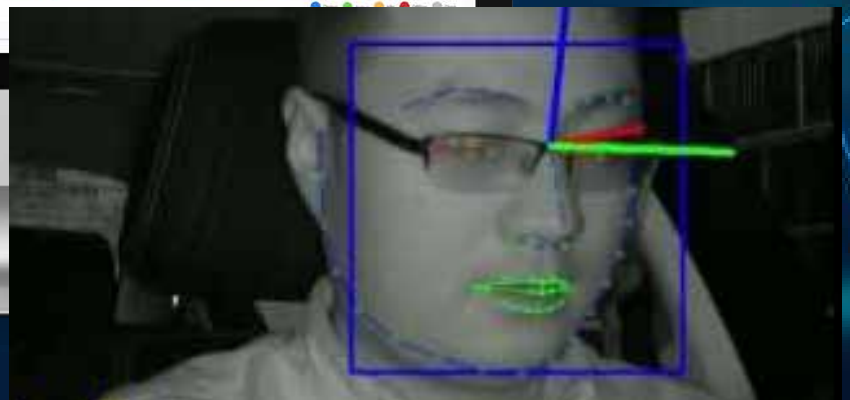
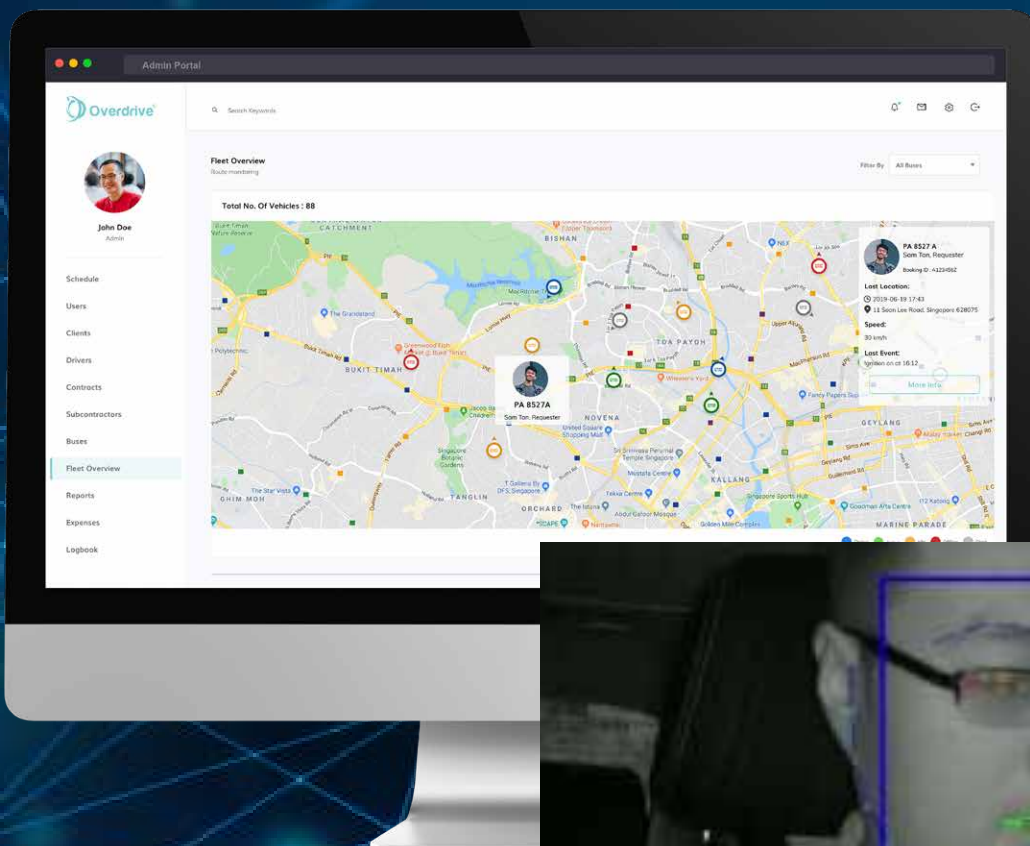


## The Solution

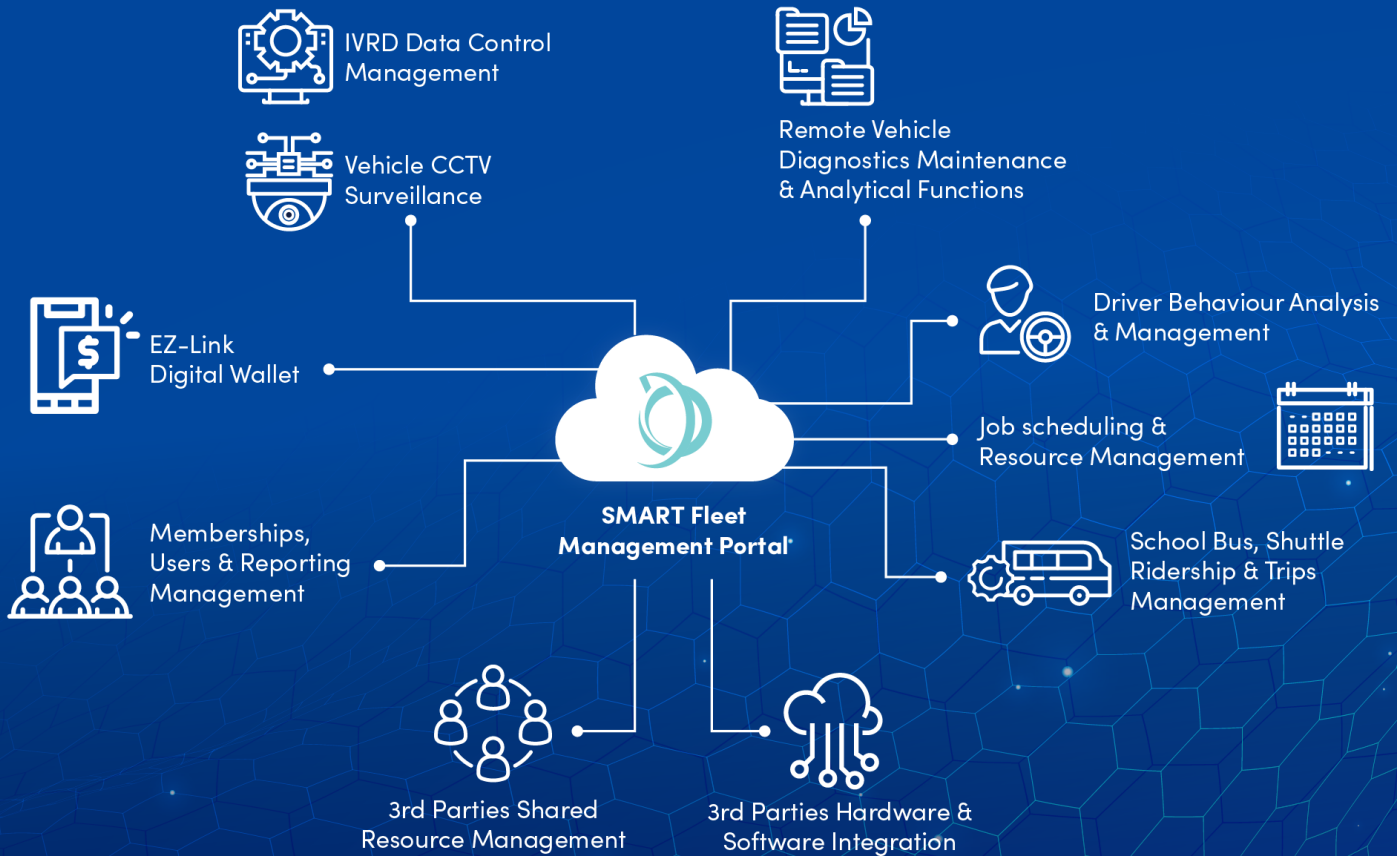
Overdrive leads the way in revolutionising fleet management with their Cloud-Based Smart Fleet Management platform. This pioneering solution, developed in collaboration with ESG, LTA, and EZ-link, empowers bus owners to embrace digitalisation for unrivalled operational efficiency and heightened safety standards.

With advanced driver-assistance systems that include live streaming capabilities, operators can ensure a safer and more efficient driving experience. Additionally, our platform seamlessly integrates digital payment options through the EZ-link gateway, eliminating the need for cash transactions and simplifying financial processes.

**Number of Assets:** 3500 vehicles & 1500 users



# How does it work?



Our solution empowers bus operators with the capabilities of web and mobile applications, granting them access to real-time data while on the move. This enables them to streamline their operations, enhance overall performance, and ensure a safer and more efficient driving experience.

## The key features of our solution include:



### Mobile digital video 360 degree views with ADAS and DMS

Monitor both internal and external of the vehicle including road condition and driver monitoring for improved safety and security.



### Job Scheduling and Resource Management

Enable drivers to efficiently schedule and manage job tasks and resources to optimise fleet operations and productivity.



### Integrated Fleet Management

Gain real-time updates on the location of your fleet and have full control over operations through a centralized platform.



### Parent Mobile App

Enable drivers to efficiently schedule and manage job tasks and resources to optimise fleet operations and productivity.



### Route Optimization

Automate routing, planning, and scheduling of buses to improve fleet efficiency and minimize travel time.



### User Management

Streamline transport-related processes and reduce administrative work through effective user management.



### EZ Link Digital Wallet

Enjoy the convenience of cashless payments and collections, making transactions seamless and efficient.



### Crowdsourcing

Access an online marketplace where members can bid on and resource jobs, expanding opportunities for collaboration and resource utilisation.



### Driver Behavior Analysis & Management

Detect and address dangerous driving behavior through comprehensive analysis and provide safety metrics to improve driver performance and safety.



### Remote Vehicle Diagnostics

Keep track of your vehicle's health remotely, plan maintenance activities, and prevent unexpected downtime for enhanced operational efficiency.



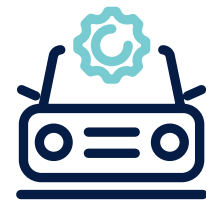
## The Benefits



**Boost Operational Efficiency**



**Accurate real-time access to vehicular data**



**Improved Vehicle Maintenance and Repair**



**Streamlined Bookkeeping and Payment Processes**



**Increased Safety and Reduced Accidents**



**Improved Customer Satisfaction**

## The Results

Overdrive's Smart Fleet Management platform has transformed fleet operations, resulting in improved efficiency, safety, cost savings, and customer satisfaction. By monitoring driver behavior and providing real-time feedback, the platform promotes safer driving habits and reduces accidents. Operators gain better control and visibility over their vehicles through

real-time location updates and comprehensive fleet data. Administrative tasks are simplified, reducing errors and saving time. With accurate real-time tracking and efficient operations, customer satisfaction is enhanced by ensuring punctuality, reliability, and a seamless travel experience.

## Who Are We

Overdrive is the leading real-time asset monitoring IOT company in Asia that provides end-to-end IoT solutions and automates data sensing of various types of assets within a business ecosystem, from vehicles and machinery to facilities and people – all under one roof.

## What We Do

Specialises in

- Vehicles Monitoring
- Airport Management
- Vessel Tracking
- Heavy Machinery Monitoring
- Smart Hygiene
- Environmental Monitoring
- Sustainability Solution

Hello,  
We Are **Overdrive.**

Overdrive IOT Pte Ltd



[www.overdriveiot.com](http://www.overdriveiot.com)



[ask@overdriveiot.com](mailto:ask@overdriveiot.com)



+65 6950 0890

