

REGION-FIRST CLOUD-BASED SMART FLEET MANAGEMENT PLATFORM FOR SINGAPORE SCHOOL & PRIVATE HIRE BUS OWNERS' ASSOCIATION (SSPHBOA)

Overdrive pioneers a cloud-based Smart Fleet Management platform for SSPHBOA. A nationwide project to encourage bus owners to digitalise their fleet, improving operational efficiency and enhancing safety by monitoring driver behaviour.

The Challenge

As a representative body of private bus service companies, SSPHBOA were faced with several challenges:

1. Vehicle Maintenance and Repair

Many small operators lack a proper system to keep track of and diagnose the operating condition of their buses, leading to higher maintenance and repair costs.

2. Adapting to Last-Minute Changes

Bus operators face challenges in providing timely customer service and efficiently handling last-minute changes. Dealing with such changes can be time-consuming and involve low-value tasks.

3. High Accident Rate

Drivers' lack of concentration while driving, such as driving while tired, using mobile phones, or smoking, contributes to a higher accident rate.

4. Manual Logging and Planning

The absence of a proper system for planning drivers and scheduling routes leads to the wastage of man-hours. Manual processes for logging and planning are prone to errors and time-intensive.

5. Complicated Bookkeeping and Payment Process

Current cash transactions lack a proper system for replacement, resulting in wasted man-hours and errors in cash handling.

6. Manpower Issues

Bus operators are grappling with a shortage of manpower which resulting in inefficient operation and increase in safety risks within the industry.

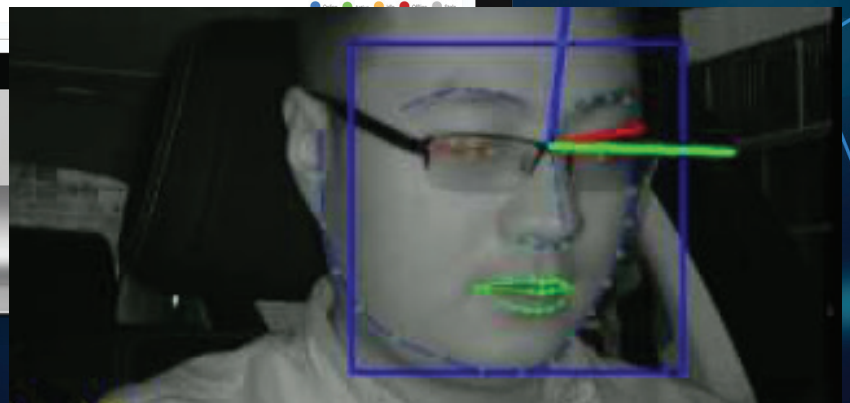
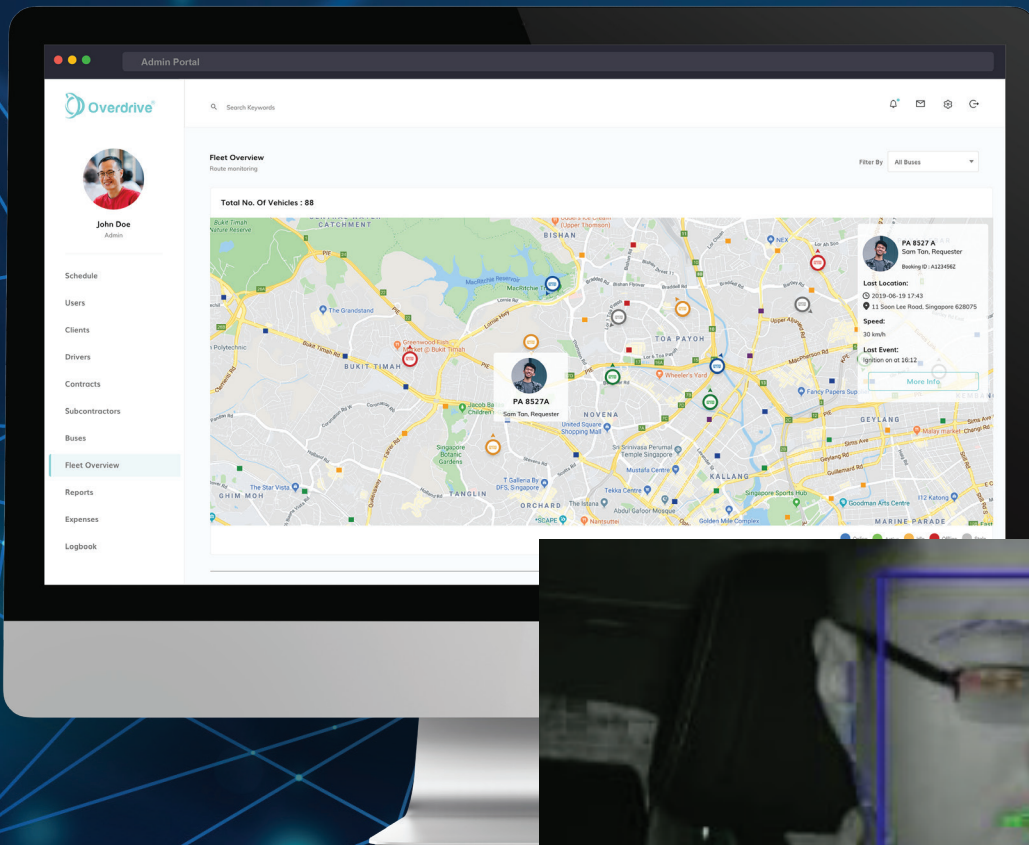


The Solution

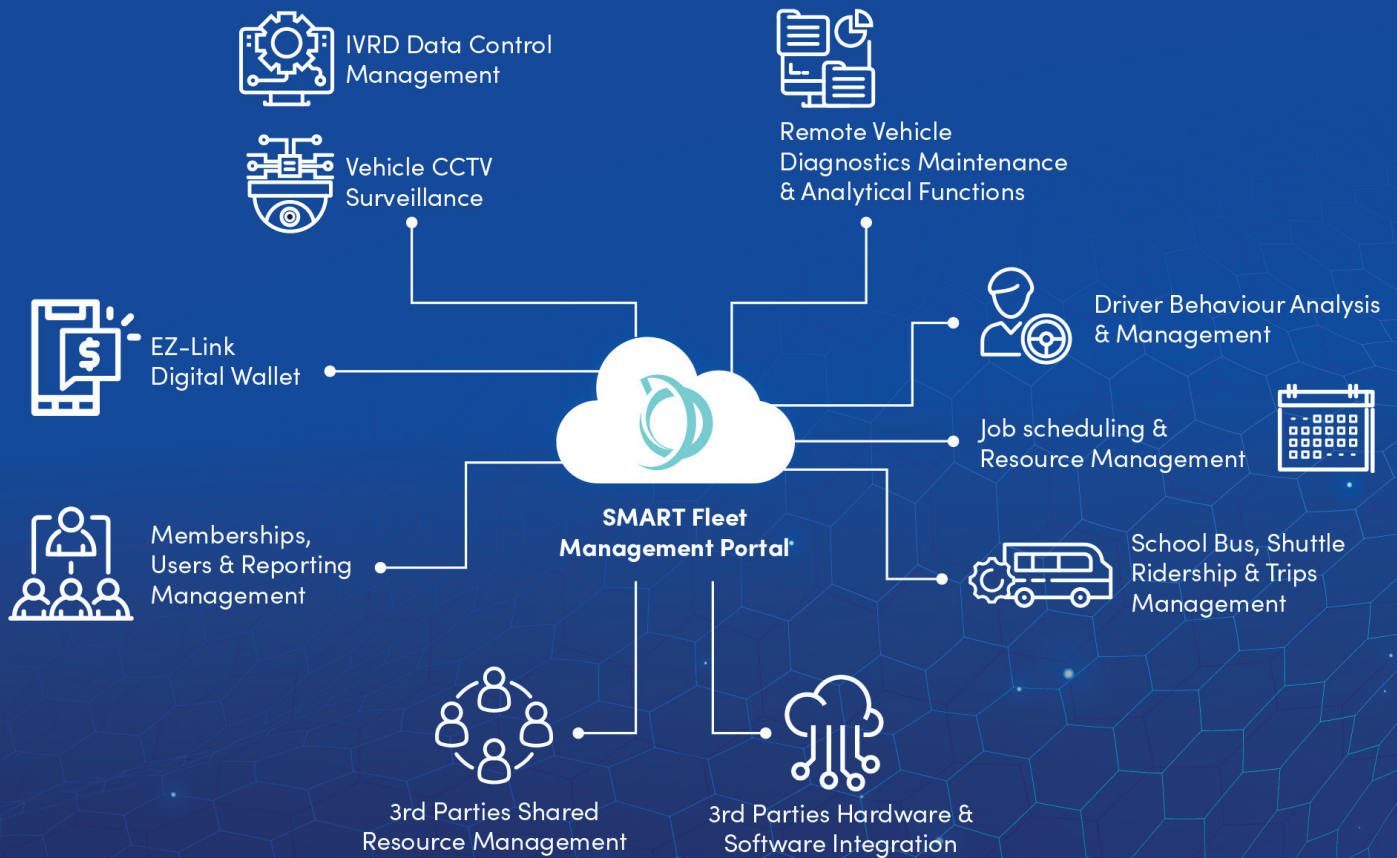
Overdrive leads the way in revolutionising fleet management with their Cloud-Based Smart Fleet Management platform. This pioneering solution, developed in collaboration with ESG, LTA, and EZ-link, empowers bus owners to embrace digitalisation for unrivalled operational efficiency and heightened safety standards.

With advanced driver-assistance systems that include live streaming capabilities, operators can ensure a safer and more efficient driving experience. Additionally, our platform seamlessly integrates digital payment options through the EZ-link gateway, eliminating the need for cash transactions and simplifying financial processes.

Number of Assets: 3500 vehicles & 1500 users
Product Used: OverWheels



How does it work?



Our solution empowers bus operators with the capabilities of web and mobile applications, granting them access to real-time data while on the move. This enables them to streamline their operations, enhance overall performance, and ensure a safer and more efficient driving experience.

The key features of our solution include:



Mobile digital video 360 degree views with ADAS and DMS
Monitor both internal and external of the vehicle including road condition and driver monitoring for improved safety and security.



Job Scheduling and Resource Management
Enable drivers to efficiently schedule and manage job tasks and resources to optimise fleet operations and productivity.



Integrated Fleet Management
Gain real-time updates on the location of your fleet and have full control over operations through a centralized platform.



Parent Mobile App
Enable drivers to efficiently schedule and manage job tasks and resources to optimise fleet operations and productivity.



Route Optimization

Automate routing, planning, and scheduling of buses to improve fleet efficiency and minimize travel time.



User Management

Streamline transport-related processes and reduce administrative work through effective user management.



EZ Link Digital Wallet

Enjoy the convenience of cashless payments and collections, making transactions seamless and efficient



Crowdsourcing

Access an online marketplace where members can bid on and resource jobs, expanding opportunities for collaboration and resource utilisation.



Driver Behavior Analysis & Management

Detect and address dangerous driving behavior through comprehensive analysis and provide safety metrics to improve driver performance and safety.



Remote Vehicle Diagnostics

Keep track of your vehicle's health remotely, plan maintenance activities, and prevent unexpected downtime for enhanced operational efficiency.



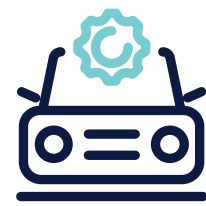
The Benefits



Boost Operational Efficiency



Accurate real-time access to vehicular data



Improved Vehicle Maintenance and Repair



Streamlined Bookkeeping and Payment Processes



Increased Safety and Reduced Accidents



Improved Customer Satisfaction

The Results

Overdrive's Smart Fleet Management platform has transformed fleet operations, resulting in improved efficiency, safety, cost savings, and customer satisfaction. By monitoring driver behavior and providing real-time feedback, the platform promotes safer driving habits and reduces accidents. Operators gain better control and visibility over their vehicles through

real-time location updates and comprehensive fleet data. Administrative tasks are simplified, reducing errors and saving time. With accurate real-time tracking and efficient operations, customer satisfaction is enhanced by ensuring punctuality, reliability, and a seamless travel experience.

Who Are We

Overdrive is the leading real-time asset monitoring IOT company in Asia that provides end-to-end IoT solutions and automates data sensing of various types of assets within a business ecosystem, from vehicles and machinery to facilities and people – all under one roof.

What We Do

Specialises in

- Vehicles Monitoring
- Airport Management
- Vessel Tracking
- Heavy Machinery Monitoring
- Smart Hygiene
- Environmental Monitoring
- Sustainability Solution

Hello,
We Are **Overdrive**.

Overdrive IOT Pte Ltd



www.overdriveiot.com



ask@overdriveiot.com



+65 6950 0890

